



SmartPRINT

User Manual

Simple Version

Table of Contents

1. SmartPRINT™ Software Installation.....	1
SmartPRINT System Requirements.....	1
1.1 Auto Installation	1
1.2 Manually Activate Software	6
1.3 Re-install SmartPRINT™ Software.....	8
1.4 How to Reset SmartPRINT™ License If PC is Format	9
2. Output to GCC Laser Via SmartPRINT™ software	11
2.1 Change Language.....	12
2.2 Setup Link to GCC Laser Machine.....	12
2.3 Insert Graphics from Library.....	14
2.4 Draw Text	14
2.5 Import Design	15
2.6 Trace Image	16
2.7 Engrave the Design.....	19
2.7.1 Define Raster or Vector Mode	19
2.7.2 Output to Laser System.....	20

1. SmartPRINT™ Software Installation

SmartPRINT System Requirements

- (Win) Windows XP/Vista/7/8/10/11
- (Mac) macOS Sonoma
- Run on Apple Silicon by Rosetta 2
- 512 MB of RAM or more
- At least 50MB of available hard disk space
- USB Port 1.1 or 2.x

1.1 Auto Installation

Step 1. Please click the following link to download SmartPRINT automatically.
The software is compatible with Windows Vista/7/8/10 and macOS X (10.6 - 10.11).

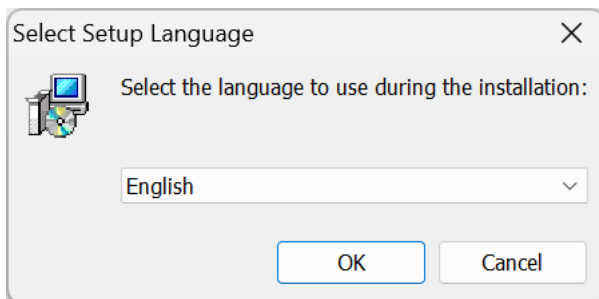
64bit:

https://www.gccworld.com/data/software/SmartPrint_Windows_V2.010-64bit.zip

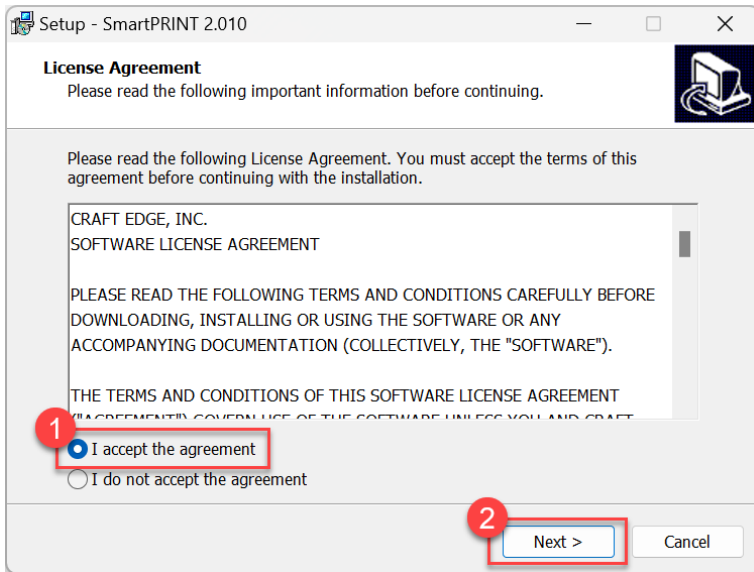
32bit:

https://www.gccworld.com/data/software/SmartPrint_Windows_V2.010-32bit.zip

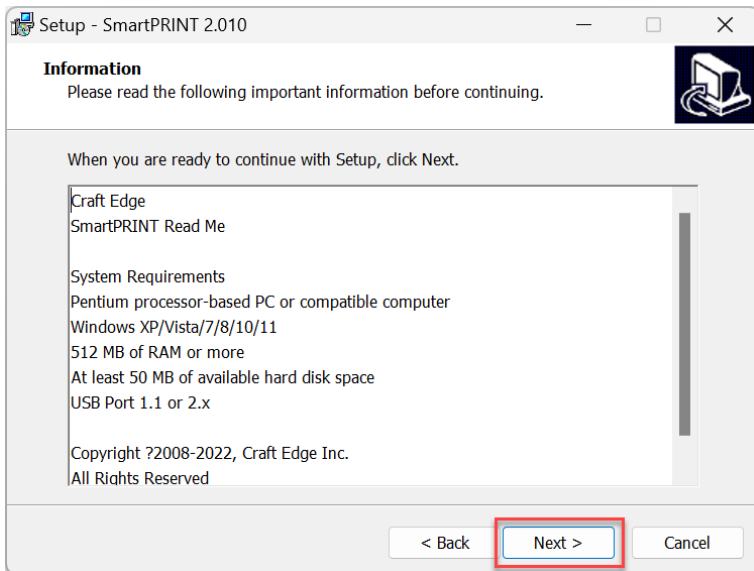
Step 2. Select setup language during the installation.



Step 3. Select "I accept the agreement" and click "Next" to continue.

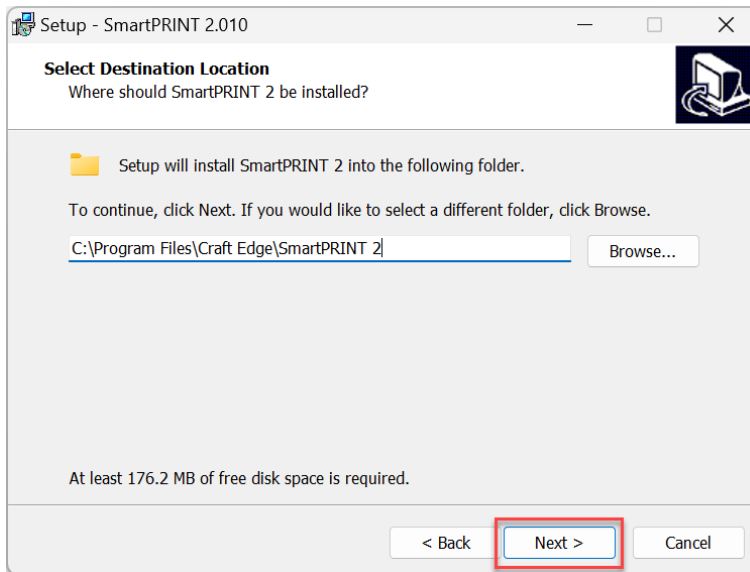


Step 4. Click "Next" to continue.

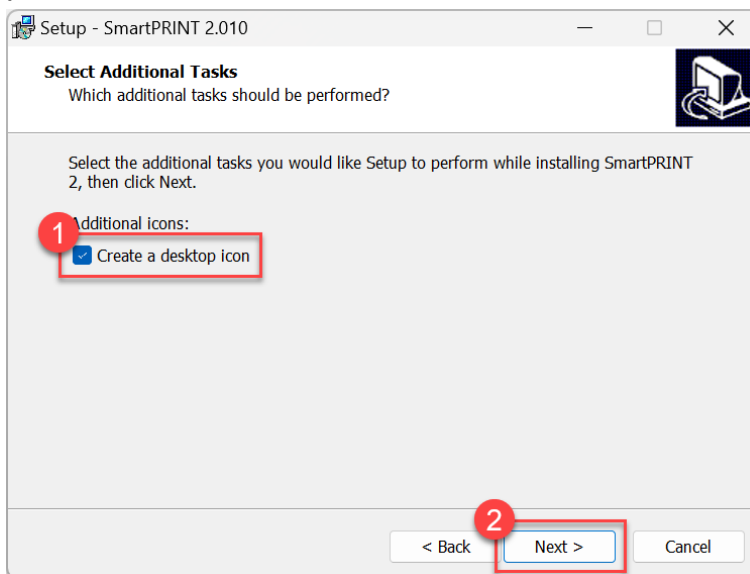


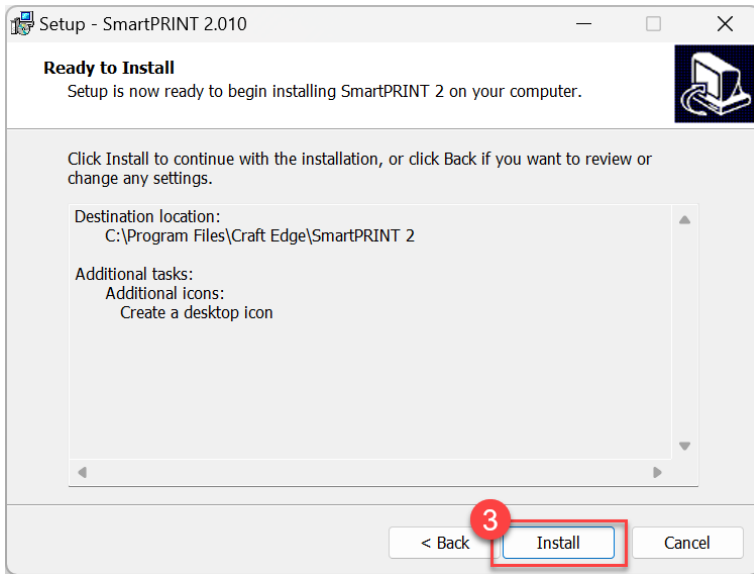
Step 5. Use the default folder (suggested) or select a folder you want to install the

SmartPRINT™ and press “Next”

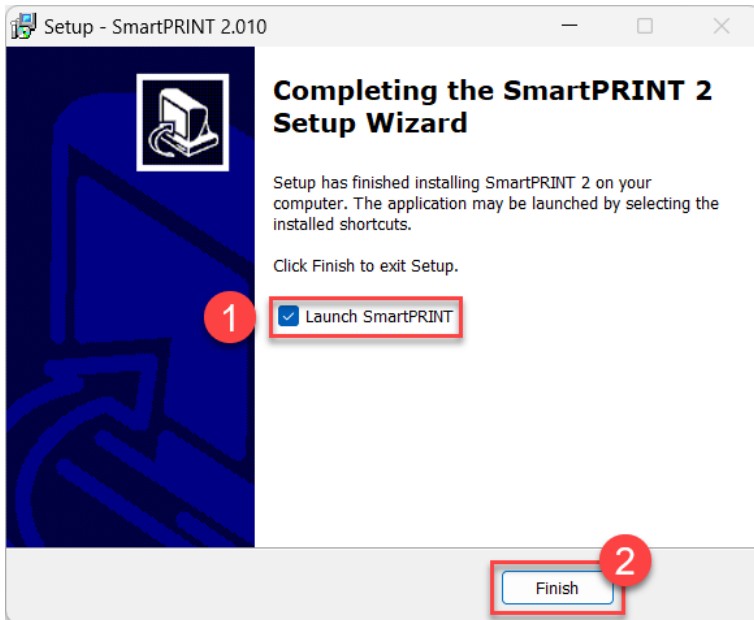


Step 6. Tick “Create a desktop icon” if you want to create a shortcut on your desktop, then press “Next” and “Install” to start the installation.





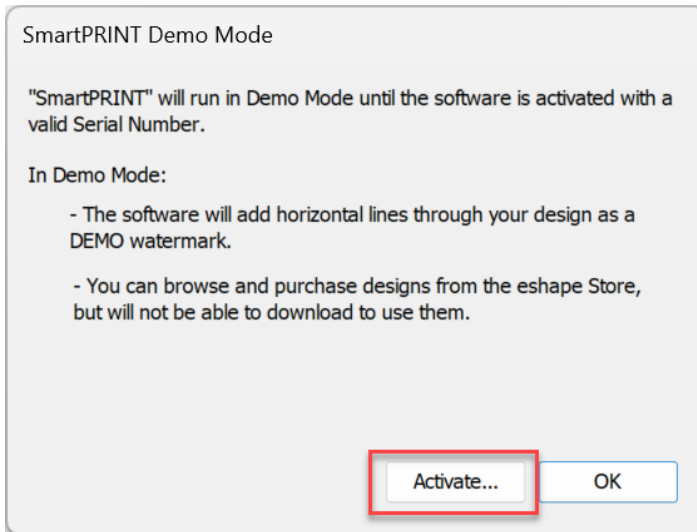
Step 7. Check “Launch SmartPRINT™,” and then press “Finish” to complete installation.



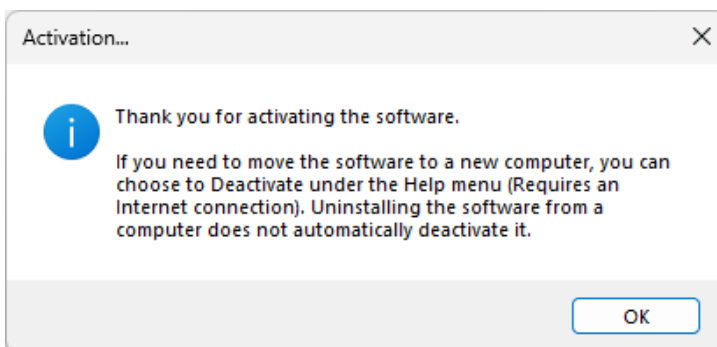
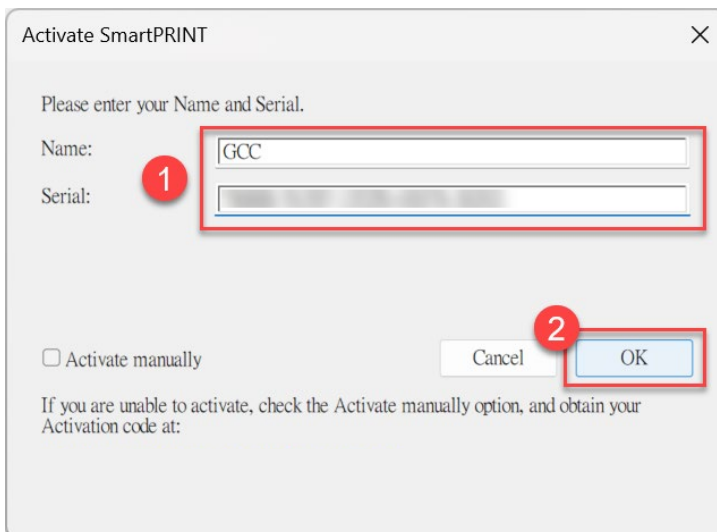
Step 8. Run SmartPRINT™.



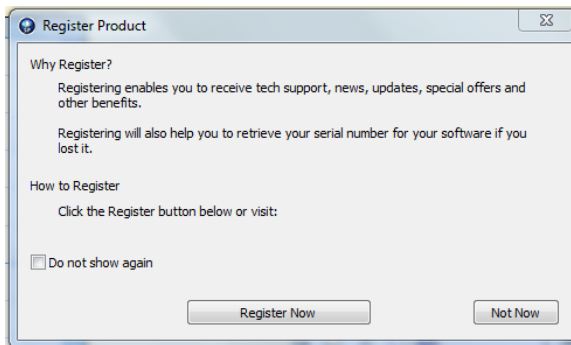
Step 9. Select “Activate...” to initiate SmartPRINT™. Please make sure computer is connected to internet.



Step 10. Enter your name in the Name column and the 25-digit software key that we e-mail to you, and press “OK” to complete the installation.



Step 11. SmartPRINT™ is ready to use. It's recommended registering SmartPRINT™ to receive tech support and updates. If you lost your serial number, registering will help you retrieve it.



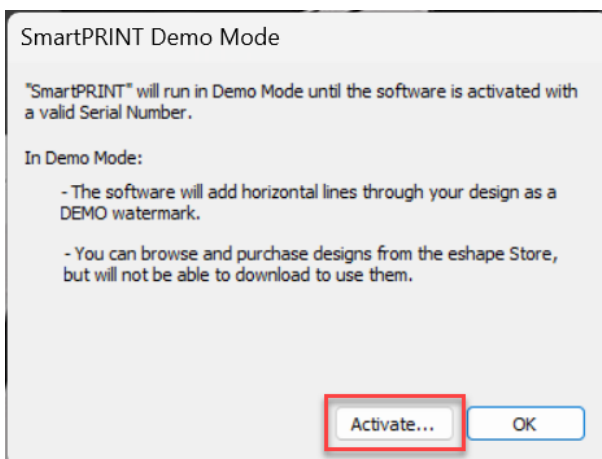
NOTE

- ✓ If you use a trial version of SmartPRINT™ to output graphics, meaning you do not enter the software key to activate the SmartPRINT™ mentioned above, there will be two extra lines cut through the design. Make sure the SmartPRINT software is activated before implementing cutting jobs.

1.2 Manually Activate Software

The serial number of SmartPRINT can be activated on 2 PCs. If your PC crashed or re-installed the OS, please refer to the following steps to “Activate manually” for your SmartPRINT.

Step 1. Run the software on your PC, then you will see the “demo mode” window, please click the “Activate...” button to continue.



Step 2. Please check the checkbox on “Activate manually”, the site code will be shown automatically.

Activate SmartPRINT

Please enter your Name, Serial and Activation Code.

Name:

Serial:

Site Code:

Activation Code:

Activate manually

Cancel OK

If you are unable to activate, check the Activate manually option, and obtain your Activation code at:

Step 3. Click the following link according to your software to open the “Generate Activation Code” page. SmartPRINT: [Software Activtion SmartPRINT](#)

Step 4. Key in your name, serial number, and site code on the website, then click the “Generate Activation Code” button to get a code.

Step 5. Now, you will get an activation code.

Name
GCC

Serial
760202-253276-561241-253904-171002
(Ex: 12345-12345-12345-12345) What is this?

Site Code
625106-663346-310926-343229
(Ex: 12345-12345-12345-12345) What is this?

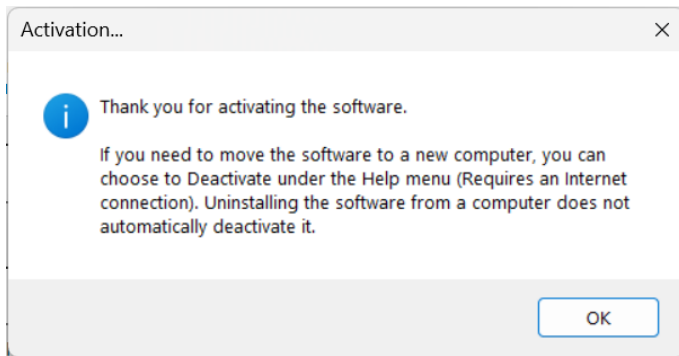
Activation Code
733176327711

Activation Code is for "SmartPRINT for Windows"

Generate Activation Code

Step 6. Back to the activate window of the software, key in your name, serial, and activation code, then click the “OK” button to activate your software.

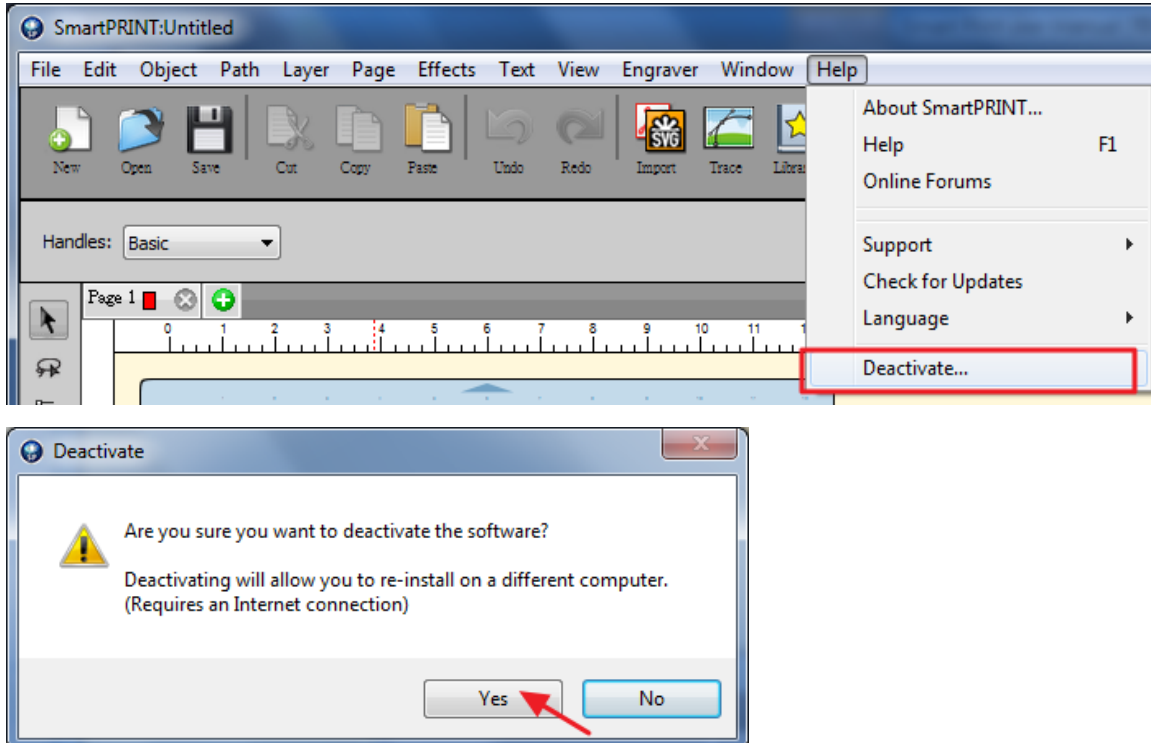
Step 7. The activation is completed.



1.3 Re-install SmartPRINT™ Software

If you change a new computer, you may need to deactivate your SmartPRINT™ software first and re-install it on your new device.

Go to “Deactivate...” under Help from Toolbar, press “Yes” to confirm, then follow the installation procedure and apply **the same 25-digit code** to activate SmartPRINT™ on another computer.



1.4 How to Reset SmartPRINT™ License If PC is Format

How to reset SmartPRINT™ license if your PC is format without deactivate flow? Follow the following steps, and you should be able to use SmartPRINT™ again.

Step 1. Click on the web site link <https://reurl.cc/6QvboO>, this page can be used to reset your serial number if you need to re-install the software again due to problems such as a computer crash/reformat where you were not able to de-activate your copy off the computer first.



Deactivate "SmartPRINT"

This page can be used to reset your serial number if you need to re-install the software again due to problems such as a computer crash/reformat where you were not able to de-activate your copy off the computer first.

If you still have an activated copy installed and you wish to deactivate to install on a different computer, you can choose Deactivate under the Help menu in SmartPRINT instead of using this webpage. The deactivation option in SmartPRINT requires an internet connection.

Important: You will only be able to use this page on a limited basis to reset your serial number. If you need your serial reset again after using this page, you will need to contact GCC Support for help.

IP Address Logged: XXXXXXXXXX

Name:
Serial:

Please describe the reason you are needing to reset your serial number

Submit

Step 2. Simply fill up your name and the serial number that you would like to deactivate, and then press submit.

Name:
Serial:

Please describe the reason you are needing to reset your serial number

Submit

Step 3. After the “Deactivate” process on the web site, you can enter the serial number on PC to start use the same license again.

Activate SmartPRINT

Please enter your Name and Serial.

Name:

Serial:

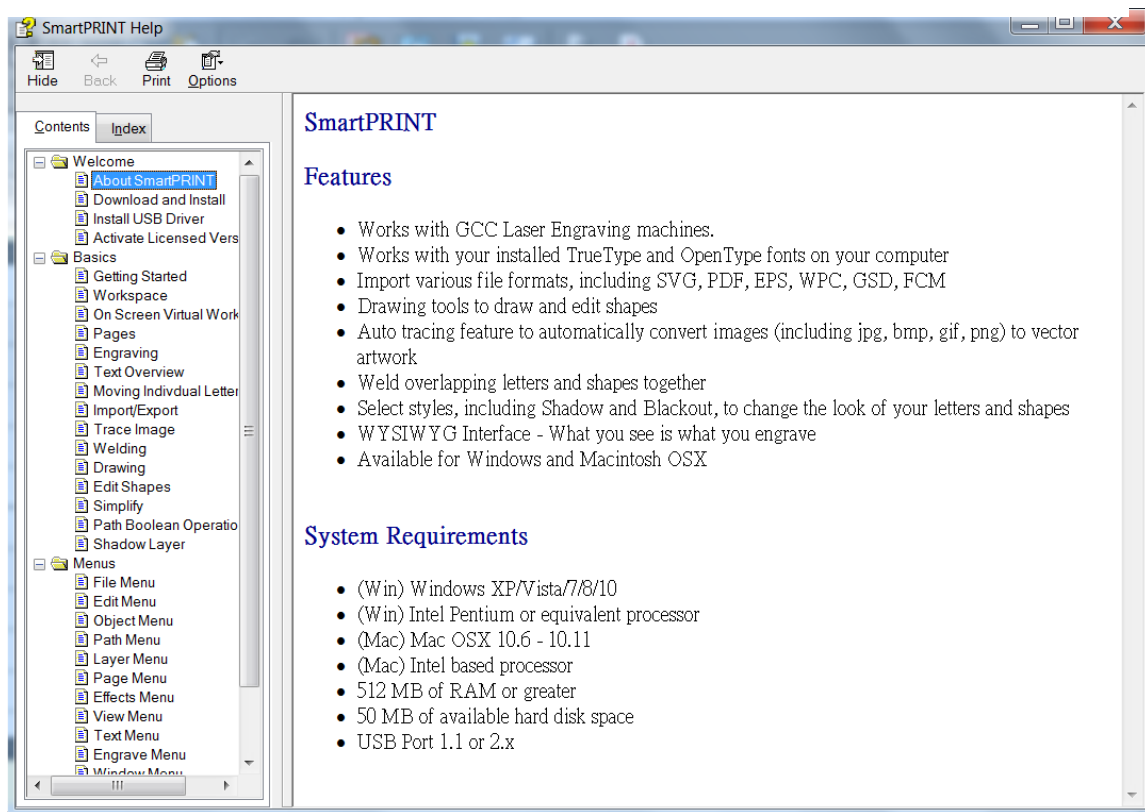
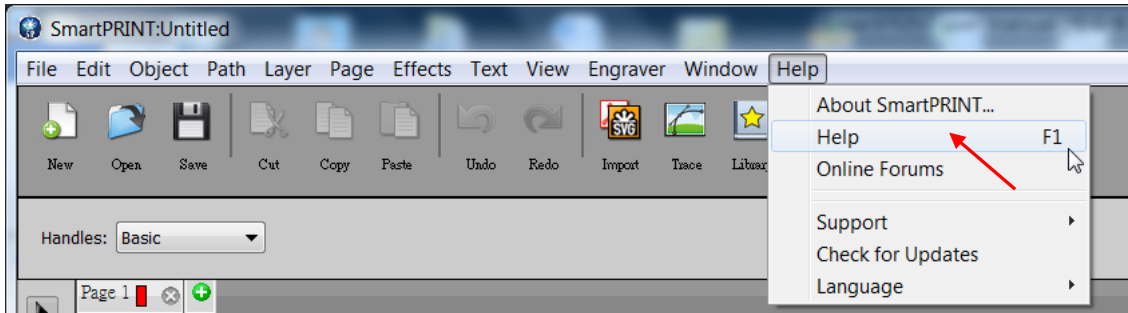
Activate manually

Cancel OK

If you are unable to activate, check the Activate manually option, and obtain your Activation code at:

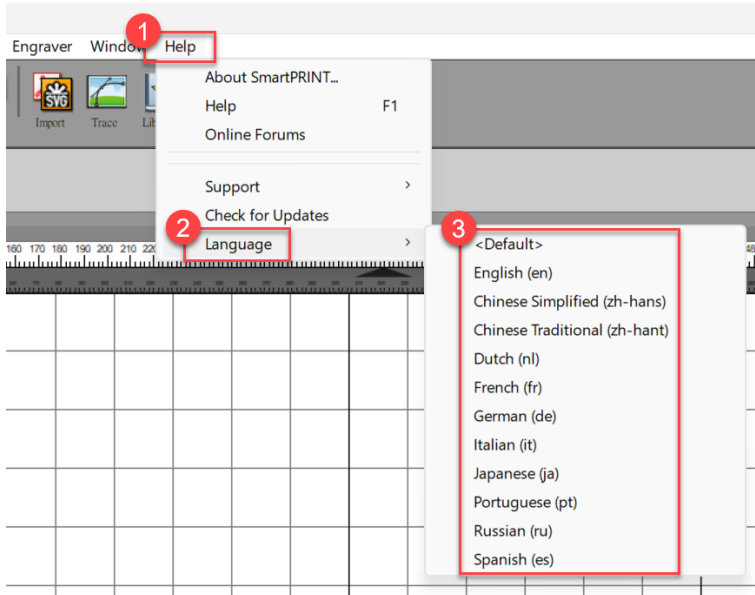
2. Output to GCC Laser Via SmartPRINT™ software

Below illustration a quick manual how to print from SmartPRINT™ to GCC LaserPro machines. Please refer to SmartPRINT™ Help from top Toolbar for various software function introduction and detailed operations.



2.1 Change Language

Step 1. Launch SmartPRINT™ software and select Language under Help.

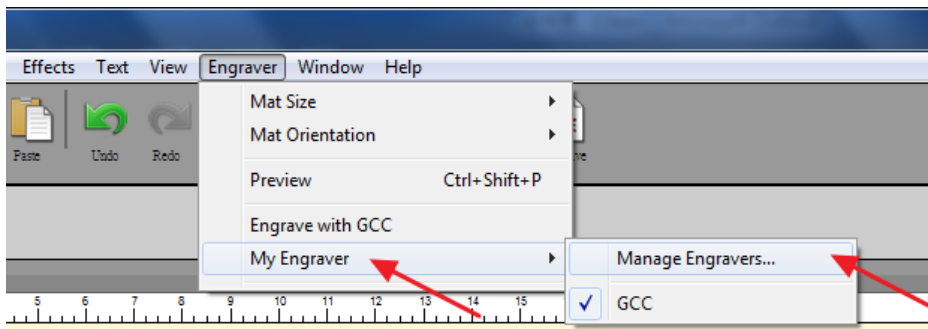


Step 2. Select the required language, and restart the program to switch to new language.

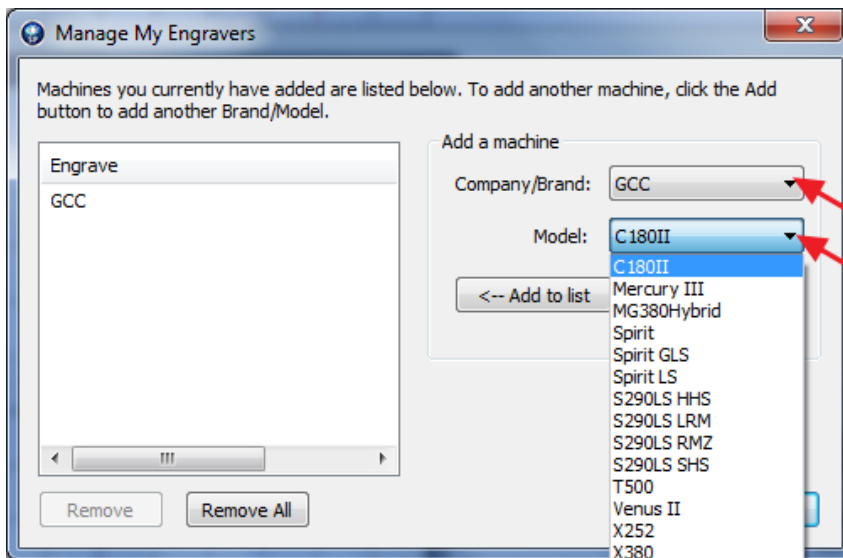
2.2 Setup Link to GCC Laser Machine

Step 1. Launch SmartPRINT™ software.

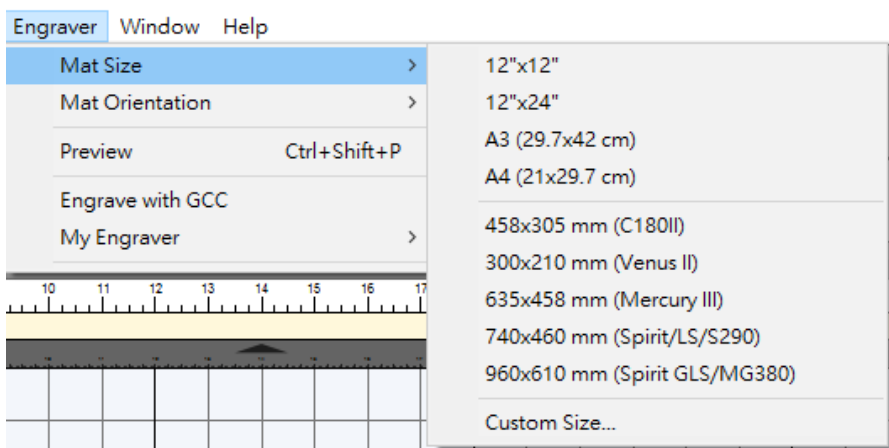
Step 2. Select “Manage My Engravers...” under “My Engraver.”



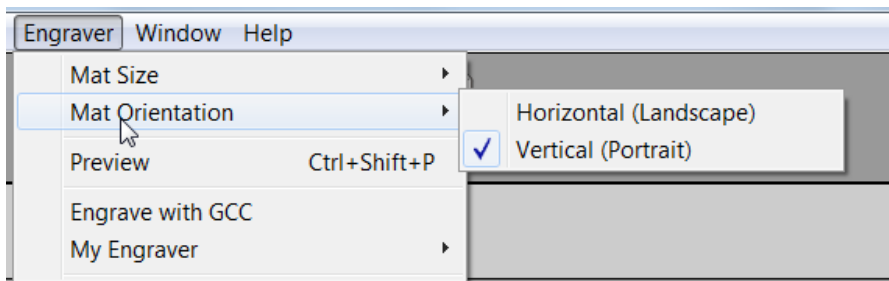
Step 3. Select the company as “GCC” and define the machine model you want to work with.



Step 4. Select “Mat Size” under “Engraver” to choose corresponding machine and work area.

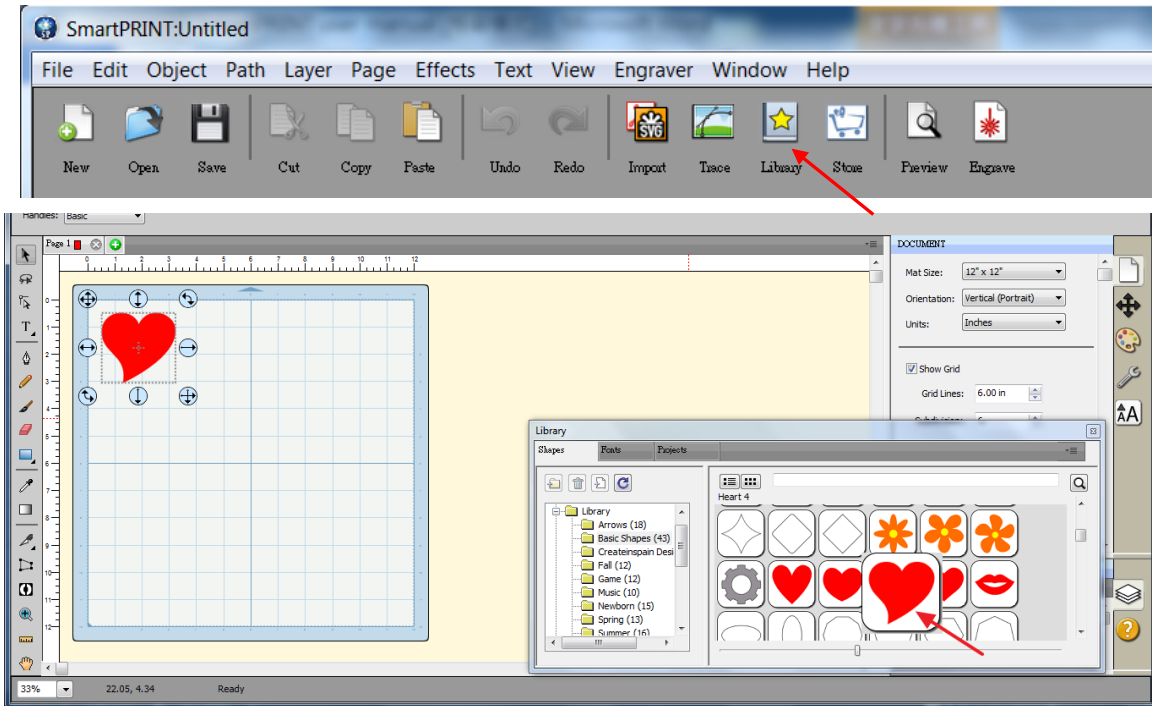


Step 5. Select “Mat Orientation” to change the mat direction to be portrait or landscape.



2.3 Insert Graphics from Library

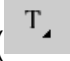
Select graphics from library to insert a selected design.

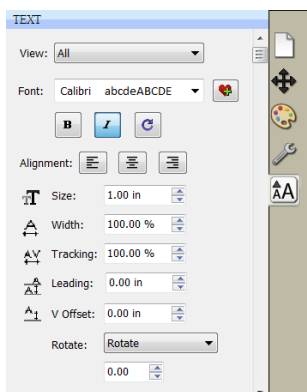


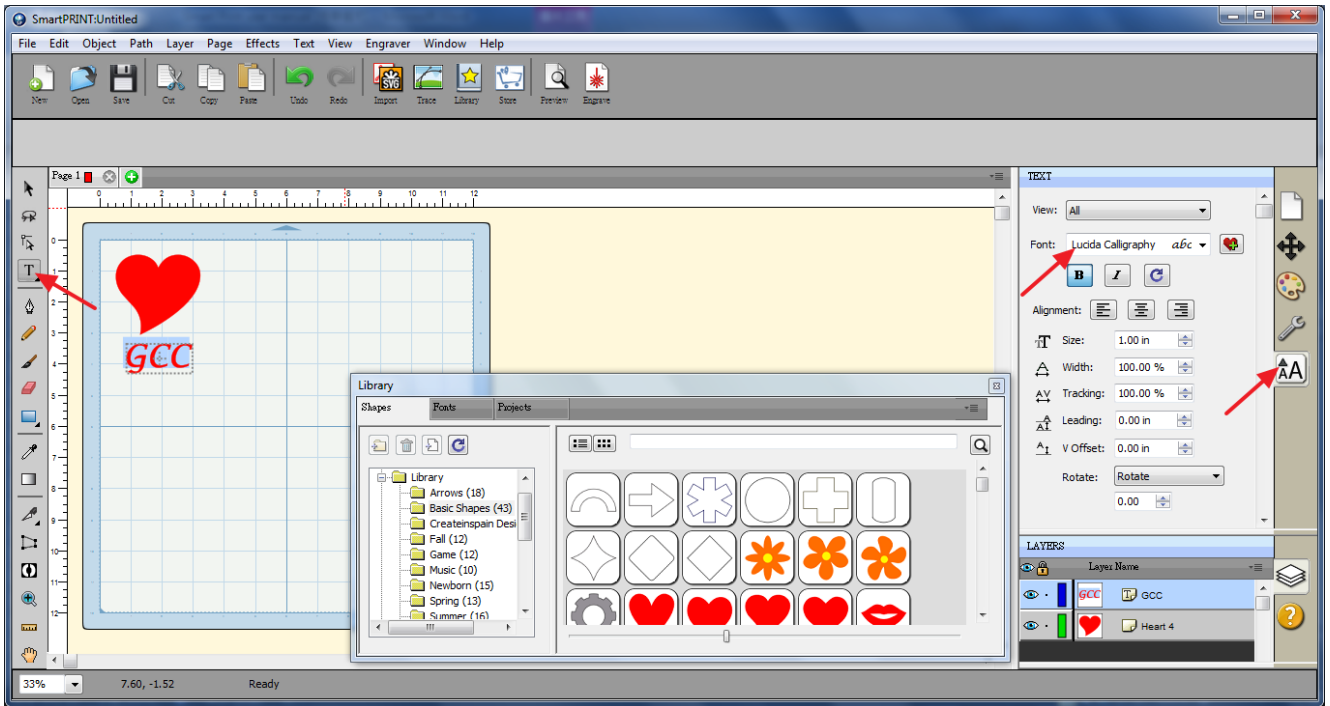
TIPS Remain the aspect ratio

- ✓ If you want to change the graphic size and remain the aspect ratio, you can change the graphic size and press "Shift" key simultaneously.

2.4 Draw Text

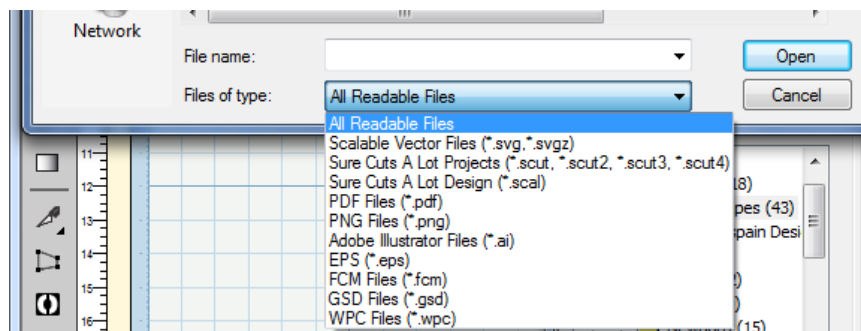
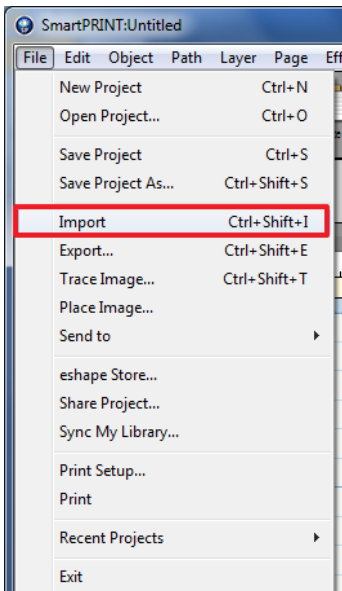
Click on the Text icon () at left side to create the text and select the font type you like at text window in the right side.





2.5 Import Design

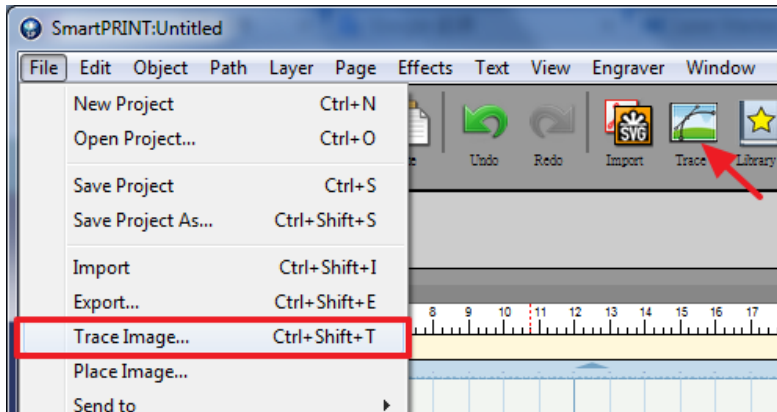
If you have created your design in other design software, go to “Import” under File to import it, SmartPRINT™ supports pdf, svg, ai, Eps, scut, scal, , png, fcm, gsd, and wpc file formats.



2.6 Trace Image

SmartPRINT™ allows you to import image files and trace the image contour for cutting.

Step 1. Go to Trace Image under File, or select Trace Image icon on the toolbar to open the setting window.



Step 2. Click on “Choose an image” to import the file, adjust Image Settings and Output Settings, and click “OK”. Then the outline of the image will be outputted automatically.

Input Settings

Choose an Image: click “Choose an image...” button. The program can accept most files (.bmp, .jpg, .gif, .png).

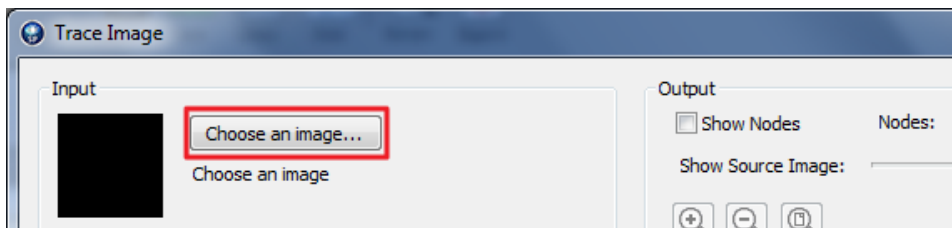
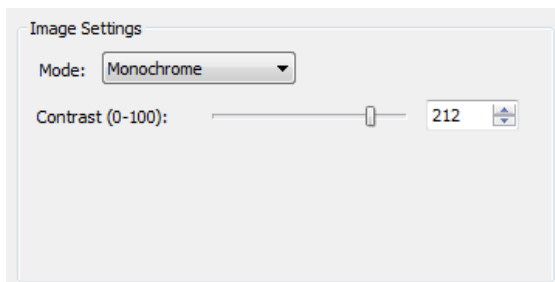


Image Settings

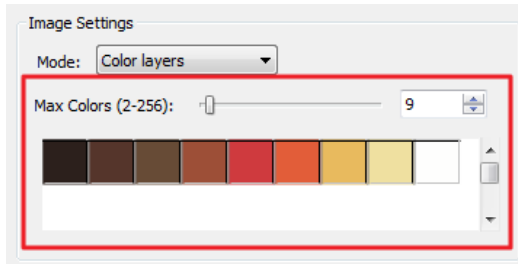
Mode: Define the tracing mode.

- **Monochrome Mode** - will trace as if the image is a black and white image.



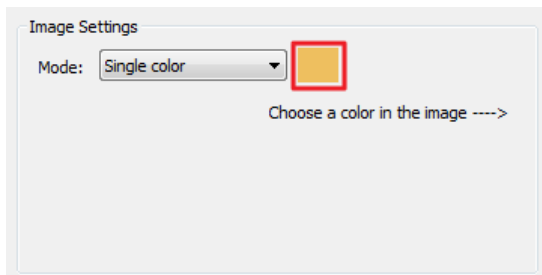
Contrast: this value will determine the cutoff to whether parts of the image should be traced. When you adjust the contrast value, the preview will change to a black and white image showing what parts of the image will be traced. To see tracing result, click the **“Update Preview”** button.

- **Color layers Mode** - will segment the image into the specified number of colors.



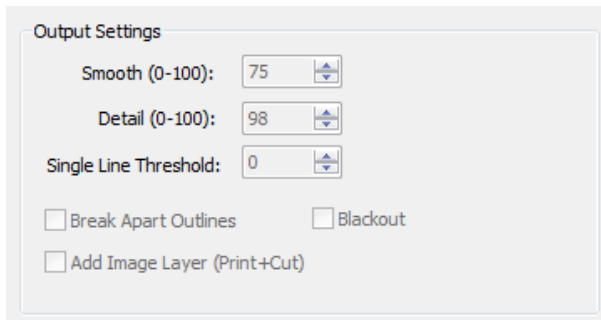
Max Colors: the maximum number of colors to segment the image into. You can turn off colors by clicking on the color boxes. To see trace results; click the **“Update Preview”** button.

- **Single Color Mode** - choose a specific color from the image to trace. To choose a color, click the **“color button”**, and then click on the preview image to choose a color.



Contrast: this value will determine the cutoff to whether parts of the image should be traced. When you adjust the contrast value, the preview will change to a black and white image showing what parts of the image will be traced. To see tracing result, click the **“Update Preview”** button.

Output Settings



Output Settings

Smooth (0-100): 75

Detail (0-100): 98

Single Line Threshold: 0

Break Apart Outlines Blackout

Add Image Layer (Print+Cut)

- ✓ **Smooth:** higher values will result in a smoother tracing.
- ✓ **Detail:** lower values will remove smaller shapes
- ✓ **Single Line Threshold:** this can be used if you are tracing images that have outlines shapes that are not filled solid to prevent having double lines.
- ✓ **Break Apart Outlines:** if checked, the trace result will be saved as separate layers for each outline created.
- ✓ **Blackout:** removes internal outlines.


NOTE

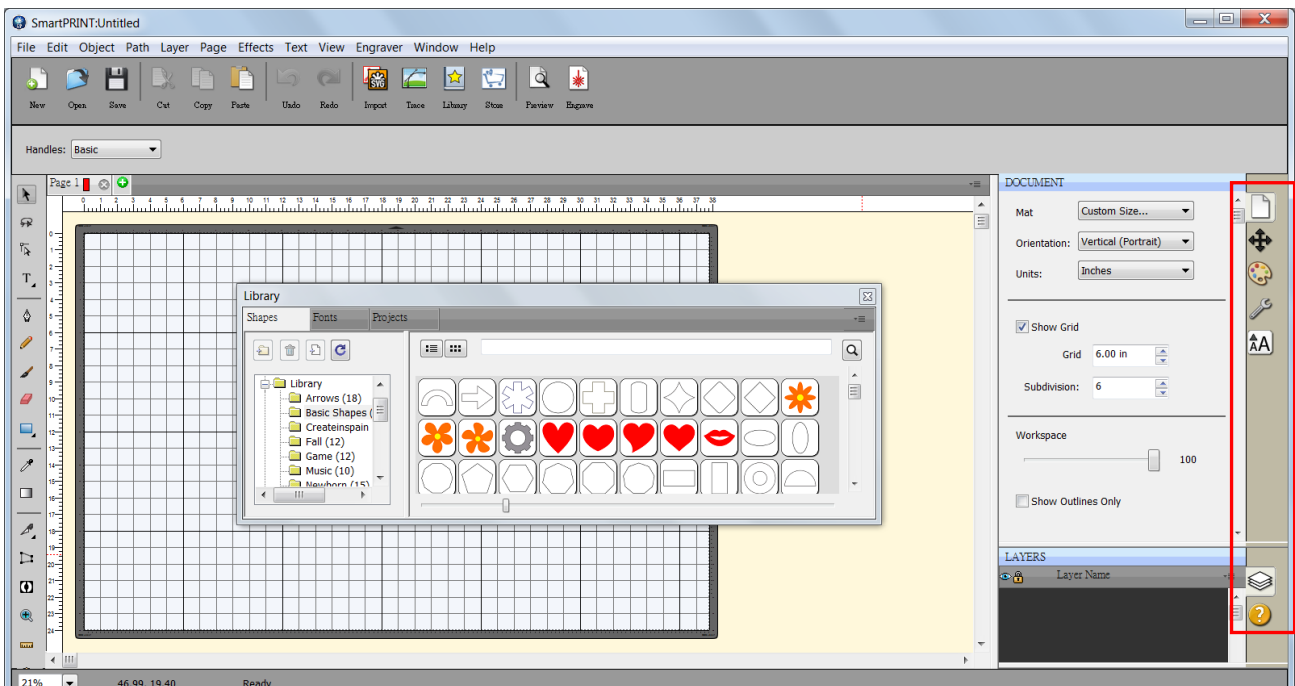
- ✓ The **contrast** and **pixels** of import images will affect the trace image result. High contrast graphics and high definition are recommended.


2.7 Engrave the Design

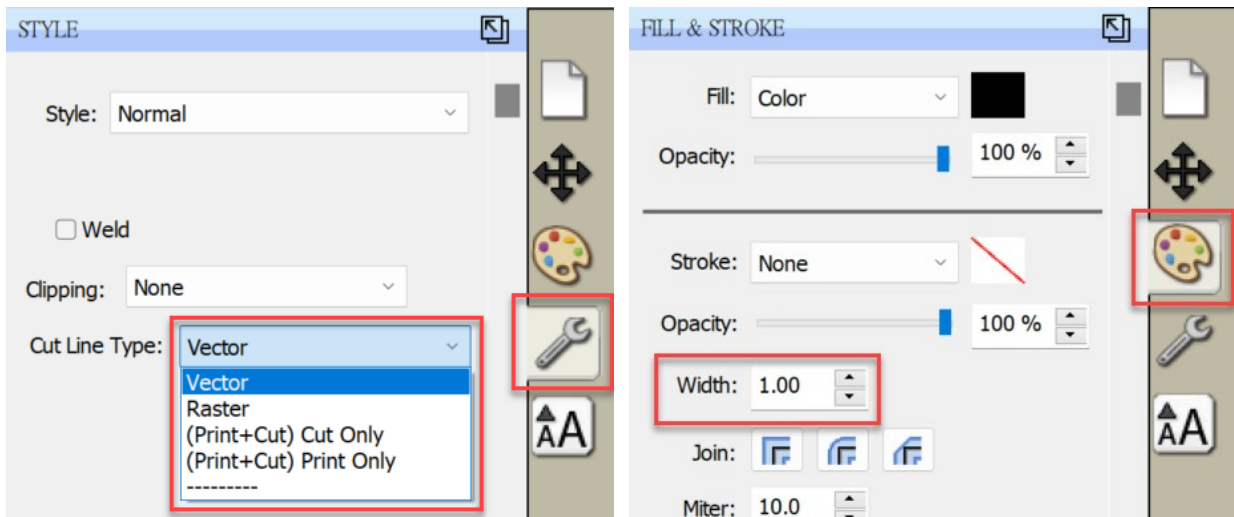
2.7.1 Define Raster or Vector Mode

Step 1. Select the graphic objects to be output to laser system.

Step 2. Click the style icon () on the right side of SmartPRINT™ to launch Style Setting Window.

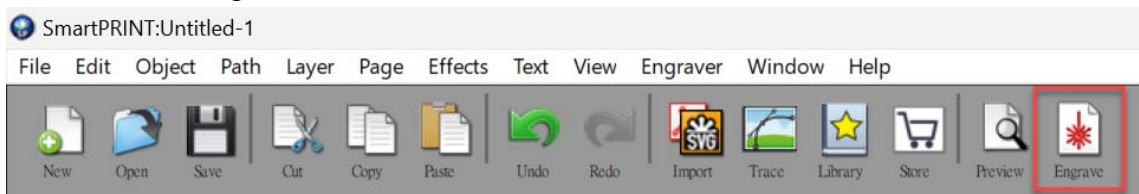


Step 3. Define to output the selected graphic as Vector or Raster from the Cut Line Type drop menu. When Vector Type is defined, the selected graphic objects will be output as Vector mode (Scribing or Cutting); while if Raster Type is defined, the graphic will be output as Raster mode (fill dots/ lines), you can further adjust the raster line width by clicking Fill & Stroke () icon, and adjusting the Width value for stroke.

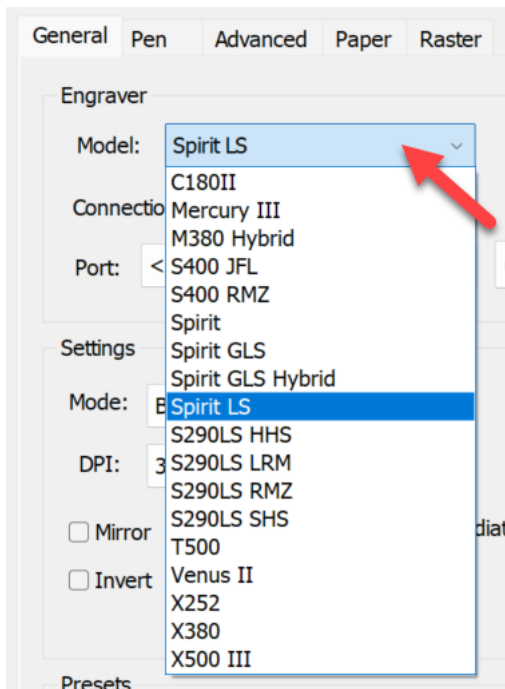


2.7.2 Output to Laser System

Step 1. Click on the “Engrave” icon on the toolbar.

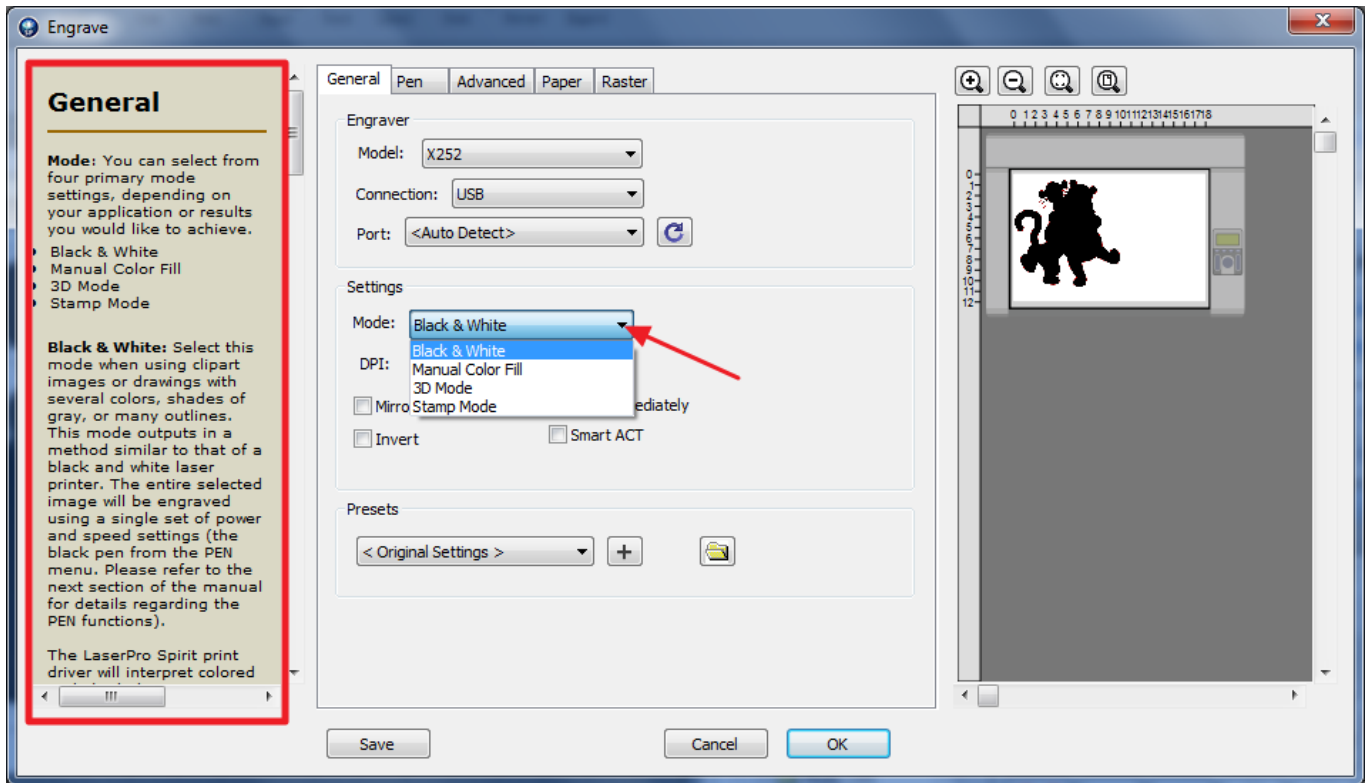


Step 2. Choosing your GCC Laser machine and its connection.



Step 3. Select laser engraving mode. There are four mode settings- Black & White, Manual Color Fill, 3D Mode, Stamp Mode, depending on the application or results you would like to achieve.

The detailed instructions for laser related parameter settings can be found on the left window.



Step 4. After finishing all settings, click “OK” to laser processing.